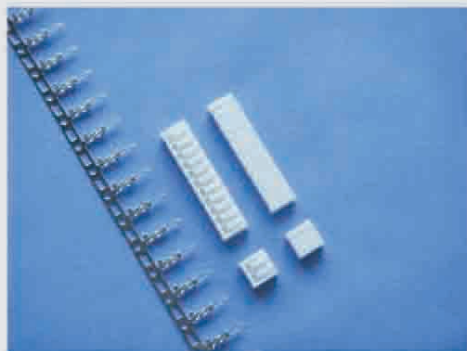


# B250004

# SCN



### 主要技术特性 (Main Specifications)

- ▶ 适用导线规格 (Applicable wire) : AWG28#~22#
- ▶ 适用基板厚度 (Applicable PC board thickness) : 1.2mm~1.6mm
- ▶ 温度范围 (Temperature range) : -25℃~+85℃
- ▶ 额定电压 (Voltage rating) : 250V AC, DC
- ▶ 额定电流 (Current rating) : 2A AC, DC
- ▶ 接触电阻 (Contact resistance) :  $\leq 0.02\Omega$
- ▶ 绝缘电阻 (Insulation resistance) :  $\geq 1000M\Omega$
- ▶ 耐压 (Withstanding voltage) : 1000V AC/minute

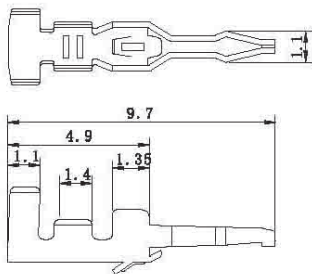
### 材料及电镀规格 Material and Finish

型号 Type	材料 Material	材料厚度 Material Thickness	电镀规格 Finish
孔座 HOUSING	PA66 UL94V-0	—	N/A
端子 TERMINAL	磷青铜 Phosphor bronze	0.2mm	镀锡 Tin-plated

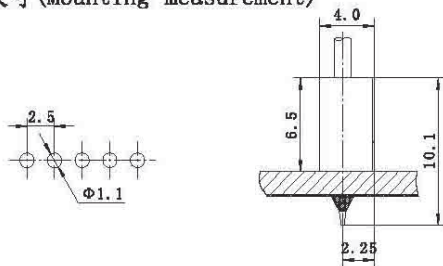
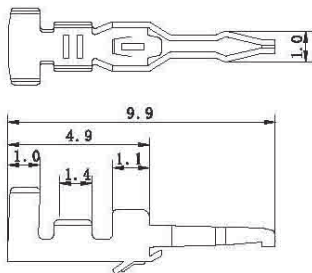
### 产品尺寸图 Product size chart

 单位: mm 一般公差:  $\pm 0.20$ 

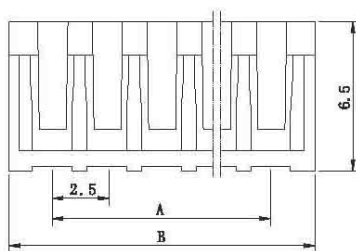
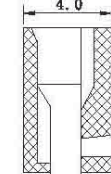
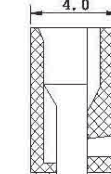
## TERMINAL

**B250004-4B** **SCN-B**


### 安装尺寸 (Mounting measurement)


**B250004-4C** **SCN-BE**


## HOUSING


**B250004-2**

**B250004-2A**


## HOUSING

极数 Circuits	型号 Type		尺寸 (Dimensions) mm		备注型号 P. S. Type	
			A	B		
2	B250004-2-02	B250004-2A-02	2.5	6.5	SCN-02P	SCN-02PDW
3	B250004-2-03	B250004-2A-03	5.0	9.0	SCN-03P	SCN-03PDW
4	B250004-2-04	B250004-2A-04	7.5	11.5	SCN-04P	SCN-04PDW
5	B250004-2-05	B250004-2A-05	10.0	14.0	SCN-05P	SCN-05PDW
6	B250004-2-06	B250004-2A-06	12.5	16.5	SCN-06P	SCN-06PDW
7	B250004-2-07	B250004-2A-07	15.0	19.0	SCN-07P	SCN-07PDW
8	B250004-2-08	B250004-2A-08	17.5	21.5	SCN-08P	SCN-08PDW
9	B250004-2-09	B250004-2A-09	20.0	24.0	SCN-09P	SCN-09PDW
10	B250004-2-10	B250004-2A-10	22.5	26.5	SCN-10P	SCN-10PDW
11	B250004-2-11	B250004-2A-11	25.0	29.0	SCN-11P	SCN-11PDW
20	B250004-2-20	B250004-2A-20	47.5	51.5	SCN-20P	SCN-20PDW