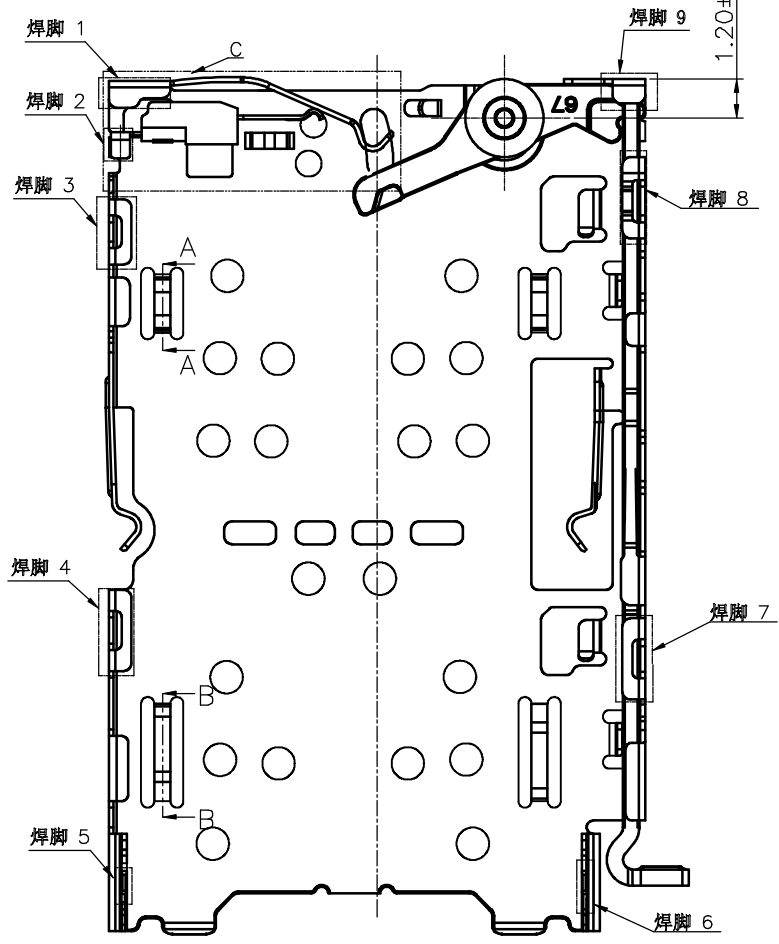
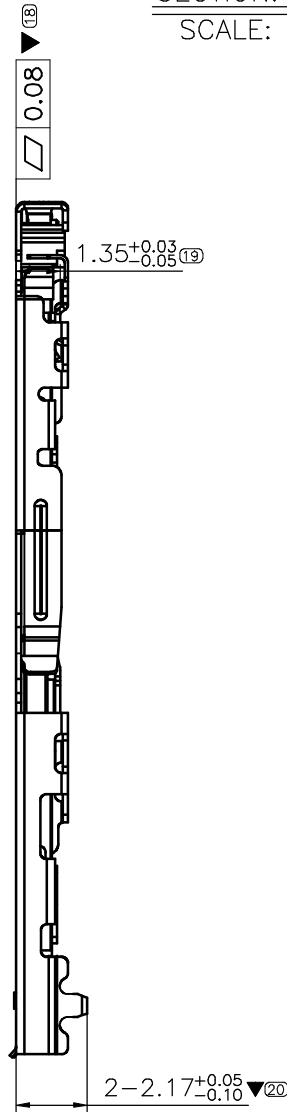
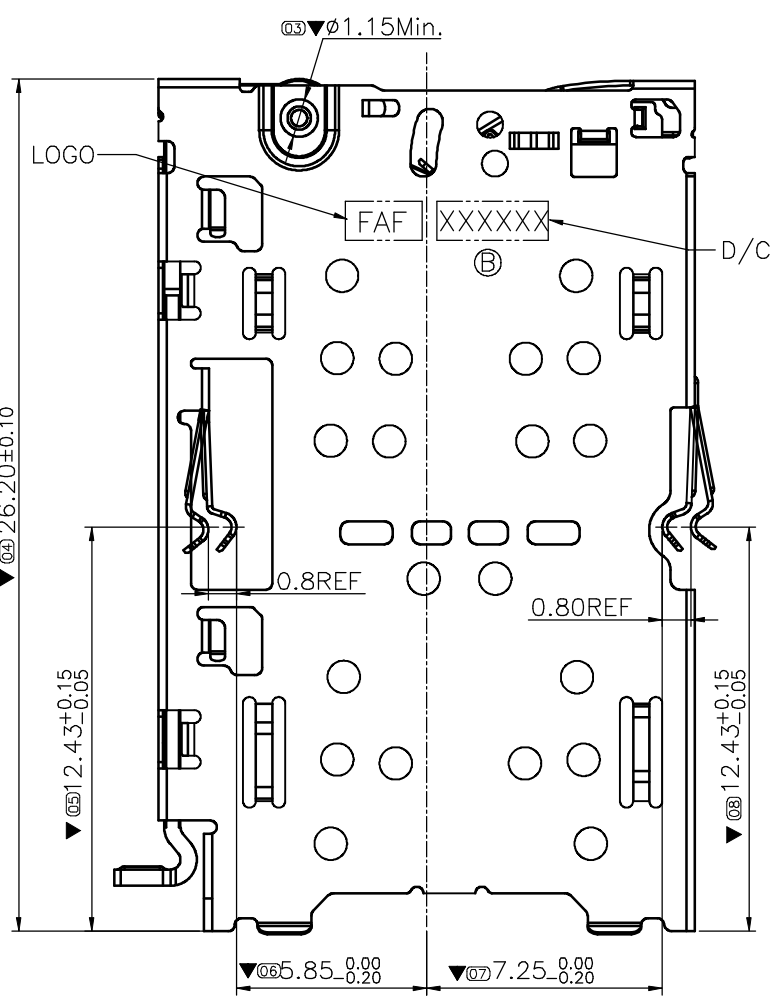
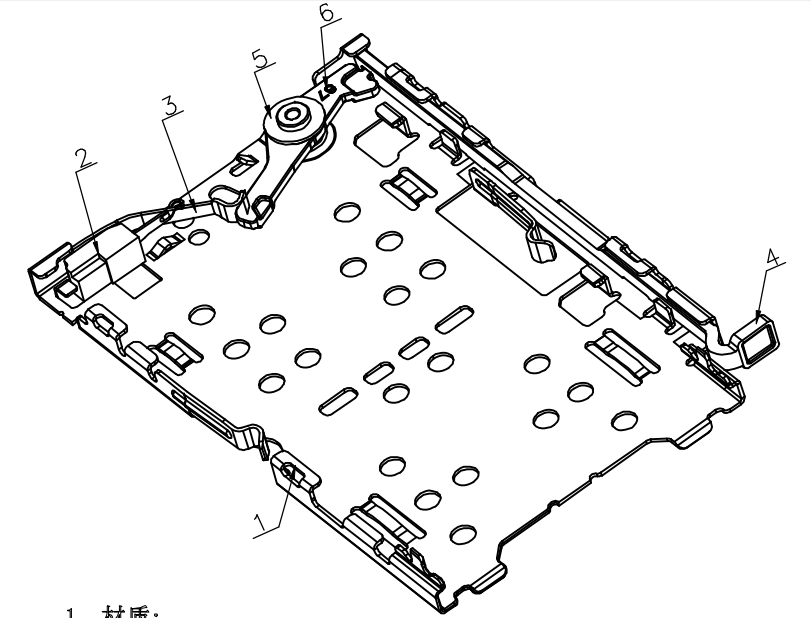
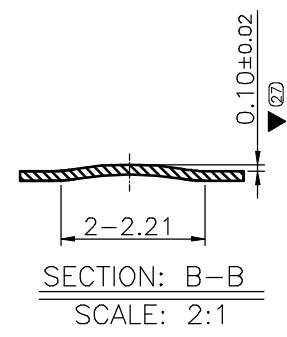
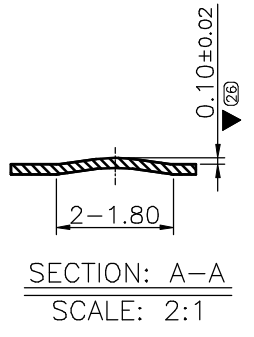
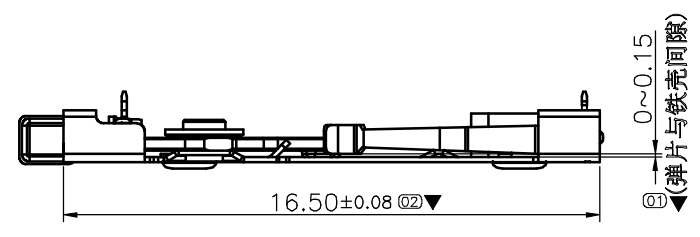
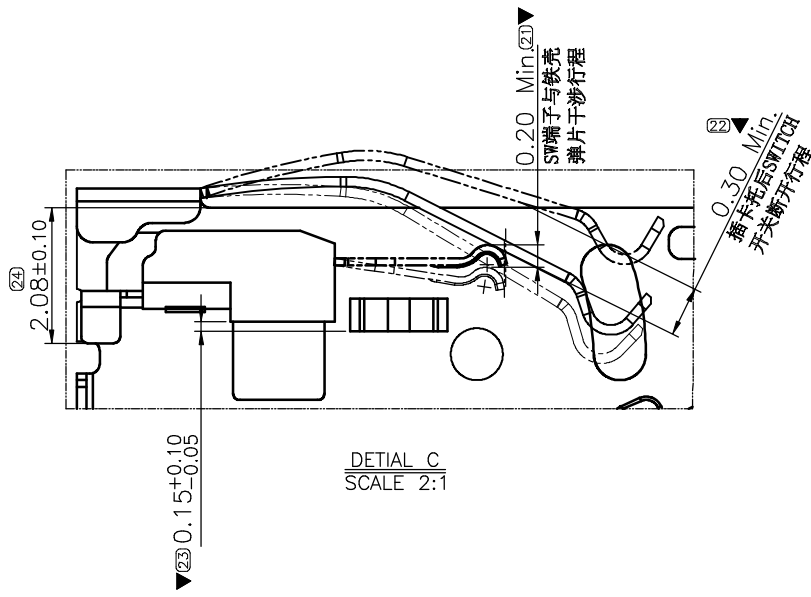
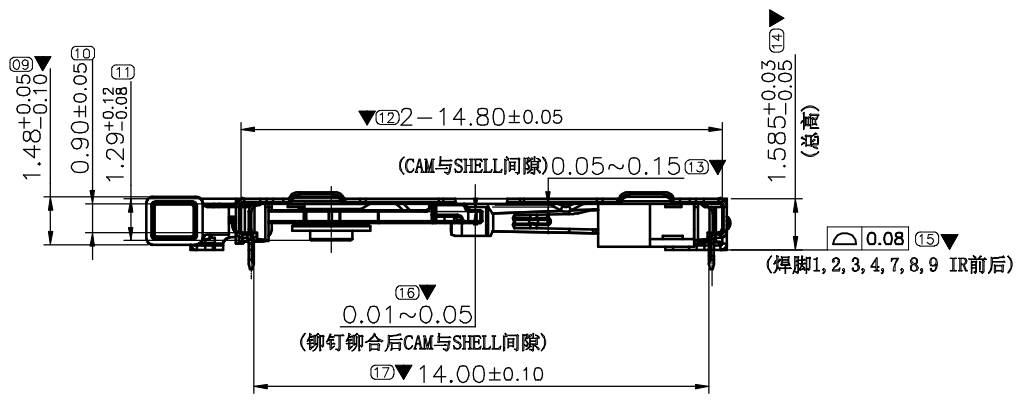


REV	ECN NO	DESCRIPTION	DATE	APPD
A	ECN1612040	正式版发行	2016.12.26	张佳华
B	ECN1706010	喷码内容增加线别和卷号	2017.06.03	



- 材质:
 - 铁壳材质: SUS301-H;
 - 推杆材质: SUS301-H;
 - CAM材质: SUS301-1/2H;
 - 铆钉材质: C3602;
 - 端子材质: C7035-TM06;
 - 塑胶材质: PA6T;
- 电镀:
 - SW接触区镀金4u" MIN, 焊接区域镀金1~3u", 镍打底50u" MIN.
- 标有 ▼ 的尺寸为重要管控尺寸; 标有 ▽ 的尺寸为关键管控尺寸.
- 标有 (**) 的尺寸为FAI需测量之尺寸;
- 所有与卡托配合的尺寸用通规检验应能通过;
- 环保要求: 来料、生产及包装运输过程必须满足FAF JH-GP-213 《环境管理物质限用作业程序》要求.
- 料号说明: 1.067A0-000-*R0

- 接触区电镀膜厚
 - 1: Au 4u" MIN
 - 2: Au G/F (2~5u")
 - 3: Au 5u" Min.
- (B) 8. D/C说明: XXXXXX
 - 生产卷号, 例如: 01
 - 生产线别
 - D/C



序号	品名	料号	数量(PCS)	材料	备注
6	CAM	1.067S2-000-0B6	1	SUS 301-1/2H	冲压后需清洗
5	铆钉(Nut)	1.052P0-000-0B0	1	C3602	电镀
4	推杆	1.067S1-000-0B6	1	SUS 301-H	冲压后需清洗
3	SW端子	1.067T0-000-1R7	1	C7035-TM06	镍底: 50u" MIN; 焊接区: 1u"~3u" Au; 接触区: 4u" MIN Au; 接触区: 盐雾48H
2	SW塑件	1.067M0-000-1Y1	1	PA 6T	Black
1	铁壳	1.067S0-000-1R6	1	SUS 301-H	镍底: 50u" MIN; 接触区: 1u"~3u" Au; 焊接区: 1u"~3u" Au; 接触区: 盐雾48H

EXTEND USE	UNIT	TITLE	DWG NO	
Double NANO CARD HOLDER H=1.585	mm	1.067A0 CONN Assembly Drawing	C-1.067A0	
GENERAL TOLERANCE	MATERIAL	APPD	P/N:	
DIMENSION	ANGLES	CHD	1.067A0-000-*R0	
.0 ±0.30	±3'	DRN	SHEET	SCALE
.0 ±0.20	.0 ±2'	程制	1/1	1:1
.00 ±0.15	.00 ±1'	2017.06.03	REV	B
.000 ±0.10				