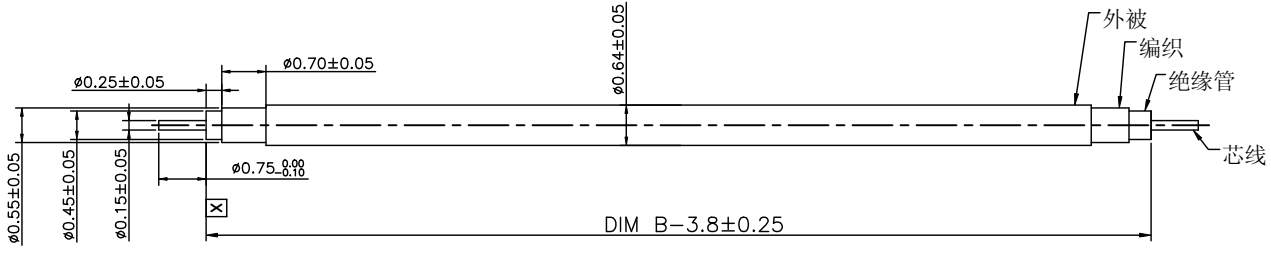
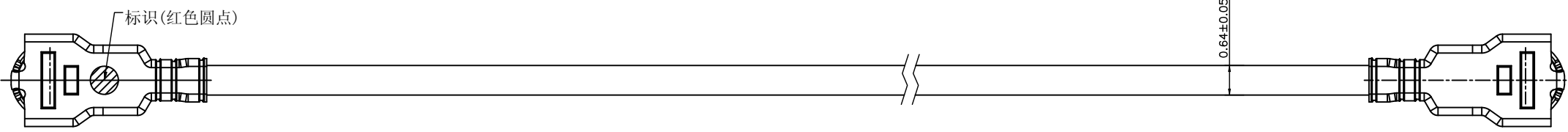
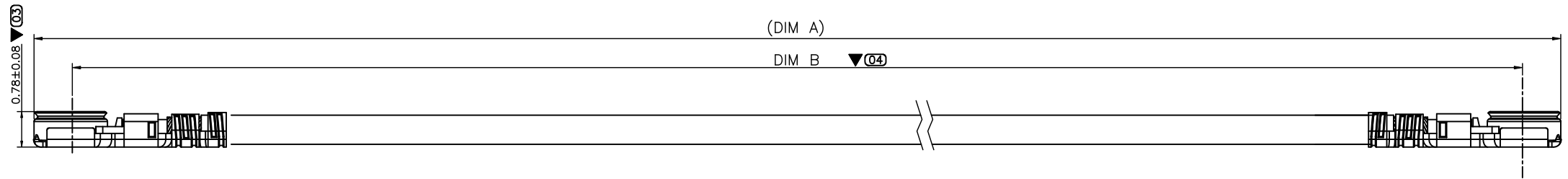
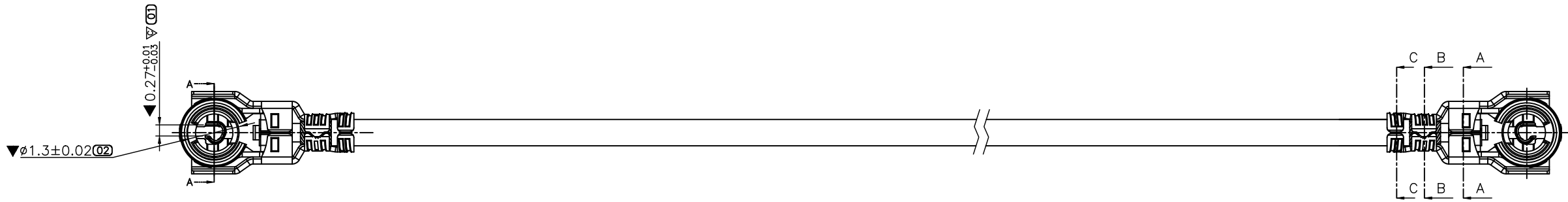


A3

REV	ECN NO	DESCRIPTION	DATE	APPD
A	ECN2009039	正式版发行	2020.09.23	张佳华
B	ECN2010040	品质提议, 为包容端子公差, 调整成品公差	2020.10.20	

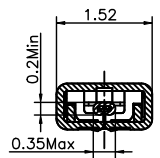
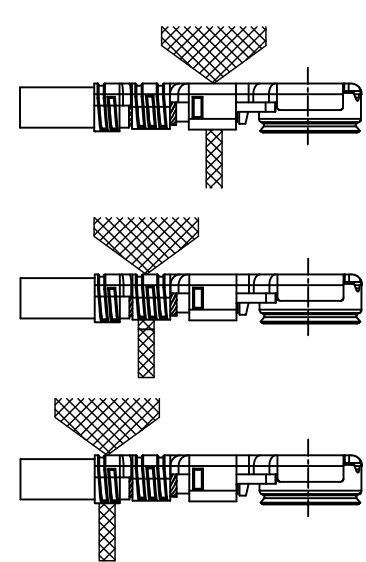


- 说明:
- 工艺参数:
 - 1.1 额定电压: 60VAC(R. M. S)
 - 1.2 额定频率: DC0.1~6G Hz
 - 1.3 特性阻抗: 50 ohms
 - 1.4 额定使用温度: -40° C~+90° C
 - 1.5 使用湿度: 25%~85%R. H. MAX
 - 电气性能:
 - 2.1 绝缘阻抗: 500M ohms Min
 - 2.2 接触电阻:
 - 2.2.1 内导体: 初态20 mohms Max, 末态40 mohms Max.
 - 2.2.2 外导体: 初态20 mohms Max, 末态40 mohms Max.
 - 2.3 耐电压: 200V AC 1minute
 - 2.4 VSWR: 500M~3G Hz<1.3.
 - 2.5 Insertion loss: 依照2/2页列表特殊栏;若无, 参考所发行0.81线径插损规格
 - 机械性能:
 - 3.1 耐久性: 30 Cycles
 - 3.2 引张强度: 7N Min.
 - 3.3 插入力: 15~20N Max;
 - 3.4 垂直拔出力: 10~15N Min(初次); 7N Min(5次); 5N(30次);
 - 3.5 拉线拔出力: 1.2~2.0N Min(初次); 1.0N Min(5次); 0.6N(30次);
 - 标有 (02) 的尺寸为FAI需测量之尺寸, 且全部尺寸需SIP(检验卡片)管控
 - 标有 (03) 的尺寸为关键管控尺寸, 标有 (04) 的尺寸为重点管控尺寸
 - 来料、生产及包装运输过程必须满足FAF JH-GP-213《环境管理物质限用作业程序》要求

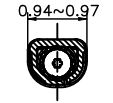
(02)
CH1:
铆合高度0.72~0.78
铆合宽度1.52~1.55

(02)
CH2:
铆合高度0.71~0.75
铆合宽度0.94~0.97

(02)
CH3: 0.77~0.81(Ref.)
铆合高度0.77~0.81
铆合宽度0.94~0.97



Section A-A



Section B-B



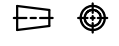

Section C-C

EXTEND USE		TITLE		FAF	
RF 1.0H CONNECTOR PLUG+CABLE		UNIT	mm	7.041AJ CONNECTOR ASSEMBLY DRAWING	
GENERAL TOLERANCE (01)		MATERIAL	APPD	DWG NO 7.041AJ	
DIMENSION	ANGLES	QTY	CHD	P/N: SEE TABLE	
. ±0.25	. ±3°	FINISHED	DRN	SHEET	SCALE
.0 ±0.15	.0 ±2°		罗艺轩 2020.10.20	1/2	1:1
.00 ±0.10	.00 ±1°				
.000 ±0.05					REV B

A3

REV	ECN NO	DESCRIPTION	DATE	APPD
		详见第一页		

打样日期	客户名称	客户项目号	产品名称	料号	DIM A	DIM B	线材料号	PLUG料号	特殊要求	备注
2020.08.08	ZTE	P653S06射频线缆01-080410400341	RF5代同轴线(∅0.64白色;L=137.2mm;双头同向)	7.041AJ-138-1B0	(138.9)	137.2±0.4	V.001C4-001-000	7.040A0-000-1R0	插损要求:500MHz~1200MHz 0.7dB Max, 1500MHz~2300MHz 1dB Max;	
2020.08.08	ZTE	P653S06射频线缆02-080410400342	RF5代同轴线(∅0.64蓝色;L=109.3mm;双头同向)	7.041AJ-110-1B0	(111)	109.3±0.4	V.001C4-002-000	7.040A0-000-1R0	插损要求:500MHz~1200MHz 0.7dB Max, 1500MHz~2300MHz 1dB Max;	
2020.08.08	ZTE	P653S06射频线缆03-080410400343	RF5代同轴线(∅0.64黑色;L=153.3mm;双头同向)	7.041AJ-156-1B0	(155.0)	153.3±0.4	V.001C4-000-000	7.040A0-000-1R0	插损要求:500MHz~1200MHz 0.7dB Max, 1500MHz~2300MHz 1dB Max;	
2020.08.08	ZTE	P653S06射频线缆04-080410400344	RF5代同轴线(∅0.64灰色;L=117.5mm;双头同向)	7.041AJ-118-1B0	(119.2)	117.5±0.4	V.001C4-003-000	7.040A0-000-1R0	插损要求:500MHz~1200MHz 0.7dB Max, 1500MHz~2300MHz 1dB Max;	

EXTEND USE			TITLE			
RF 1.0H CONNECTOR PLUG+CABLE			UNIT			
GENERAL TOLERANCE $\text{\textcircled{G}}$		MATERIAL	APPD	DWG NO 7.041AJ		
DIMENSION	ANGLES	QTY	CHD	P/N: SEE TABLE		
. ±0.25	. ±3'	FINISHED	DRN	SHEET	SCALE	REV
.0 ±0.15	.0 ±2'		罗艺轩 2020.10.20	2/2	1:1	B
.00 ±0.10	.00 ±1'					
.000 ±0.05						